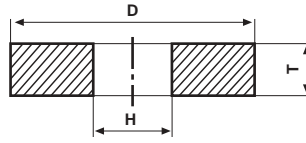


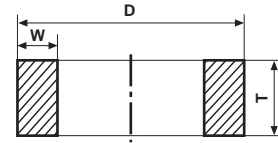
Standard Types and Shapes of Abrasive Wheels

Types and profiles of CGW abrasives are marked in accordance with international standards.

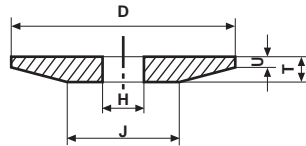
- A, B** - Width of segment or abrasive wheel
- C** - Height (of segments)
- D** - Outer diameter
- E** - Thickness around bore
- F** - Depth of recess
- G** - Depth of second recess
- H** - Diameter of bore
- J** - Diameter of flat outer surface
- K** - Diameter of flat inner surface
- L** - Length of segment or abrasive wheel
- N** - Depth of release on one side
- O** - Depth of release on other side
- P** - Diameter of recess
- R** - Radius
- T** - Thickness (general)
- U** - Thickness of edge
- V** - Angle (of profiles)
- V1** - Second angle (of profiles)
- W** - Width of wall



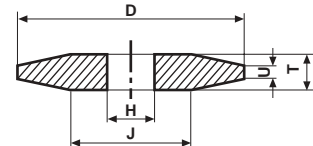
1 D_xT_xH



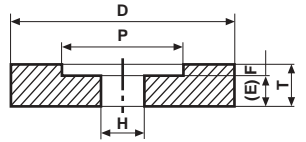
2 D_xT_xW



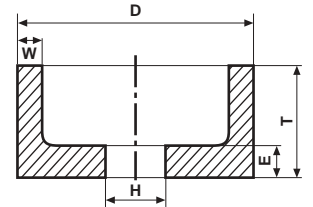
3 D/J_xT/U_xH



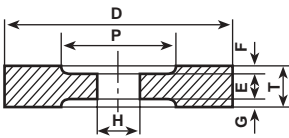
4 D/J_xT/U_xH



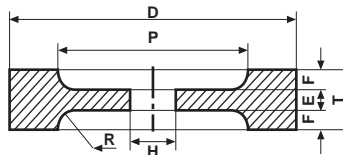
5 D_xT_xH-P_xF



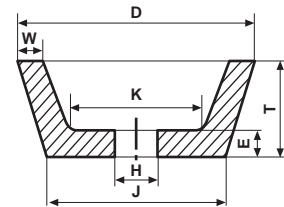
6 D_xT_xH-W..E..



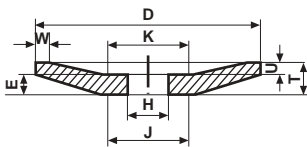
7 D_xT_xH-P_xF
or if recesses are not the same size:
D_xT_xH-P_xF/G



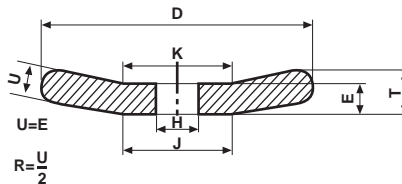
9 D_xT_xH-P_xF R..



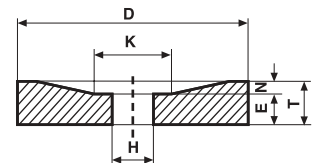
11 D/J_xT_xH-W..E..K



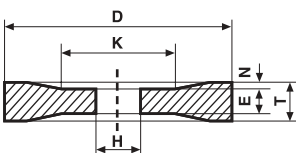
12 D/J_xT/U_xH



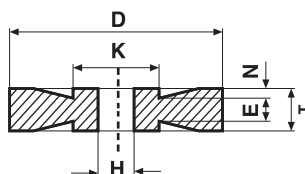
13 D/J_xT/U_xH



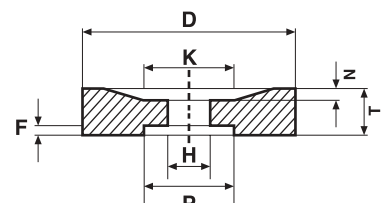
20 D/K_xT/N_xH



21 D/K_xT/N_xH

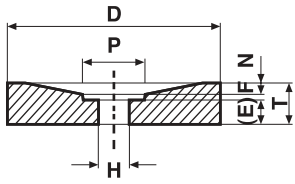


21A D/K_xT/N_xH

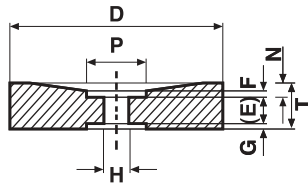


22 D/K_xT/N_xH-P_xF

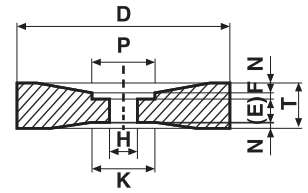
Standard Types and Shapes of Abrasive Wheels - Cont.



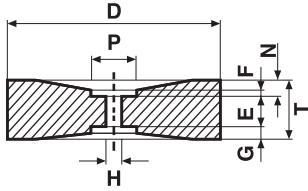
23 DxT/NxH-PxF



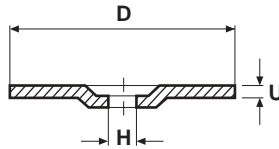
24 DxT/NxH-PxF
or if recesses are
not the same size:
DxT/NxH-PxF/G



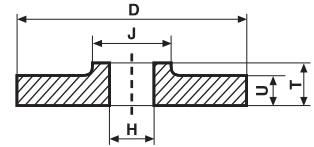
25 DxT/NxH-PxF



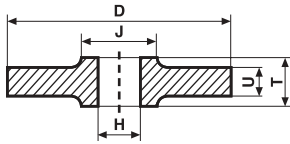
26 DxT/NxH-PxF
or if recesses are
not the same size:
DxT/NxH-PxF/G



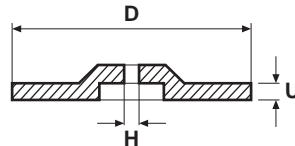
27 DxUxH



38 D/JxT/UxH



39 D/JxT/UxH



43 DxUxH

Standard Profiles

